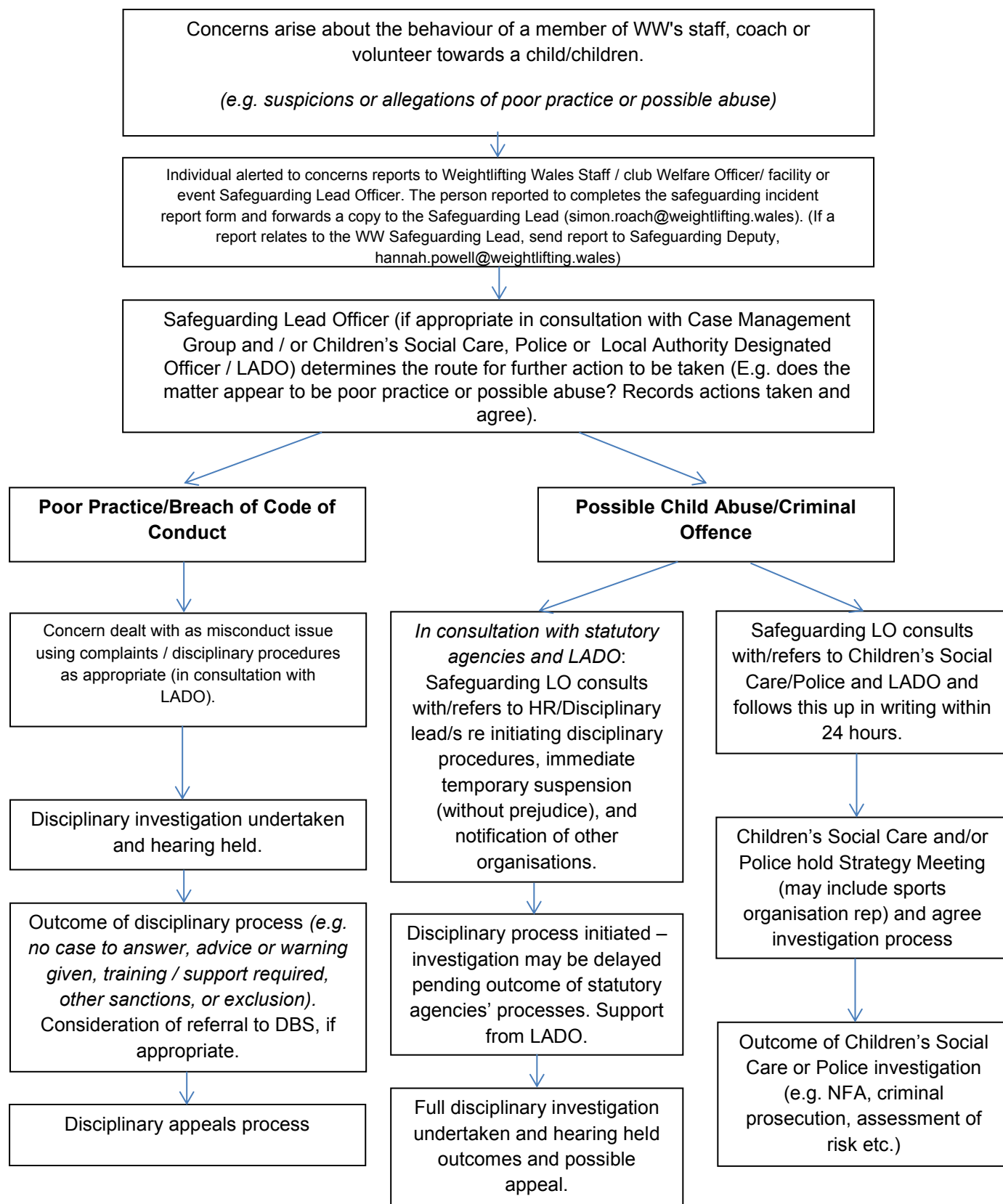


CPSU procedure flowcharts

Adopted by WW

Outline safeguarding reporting procedure concerns

1. About the behaviour of Weightlifting Wales's staff member or volunteer (e.g. allegation about a coach or officer's behaviour towards a child)

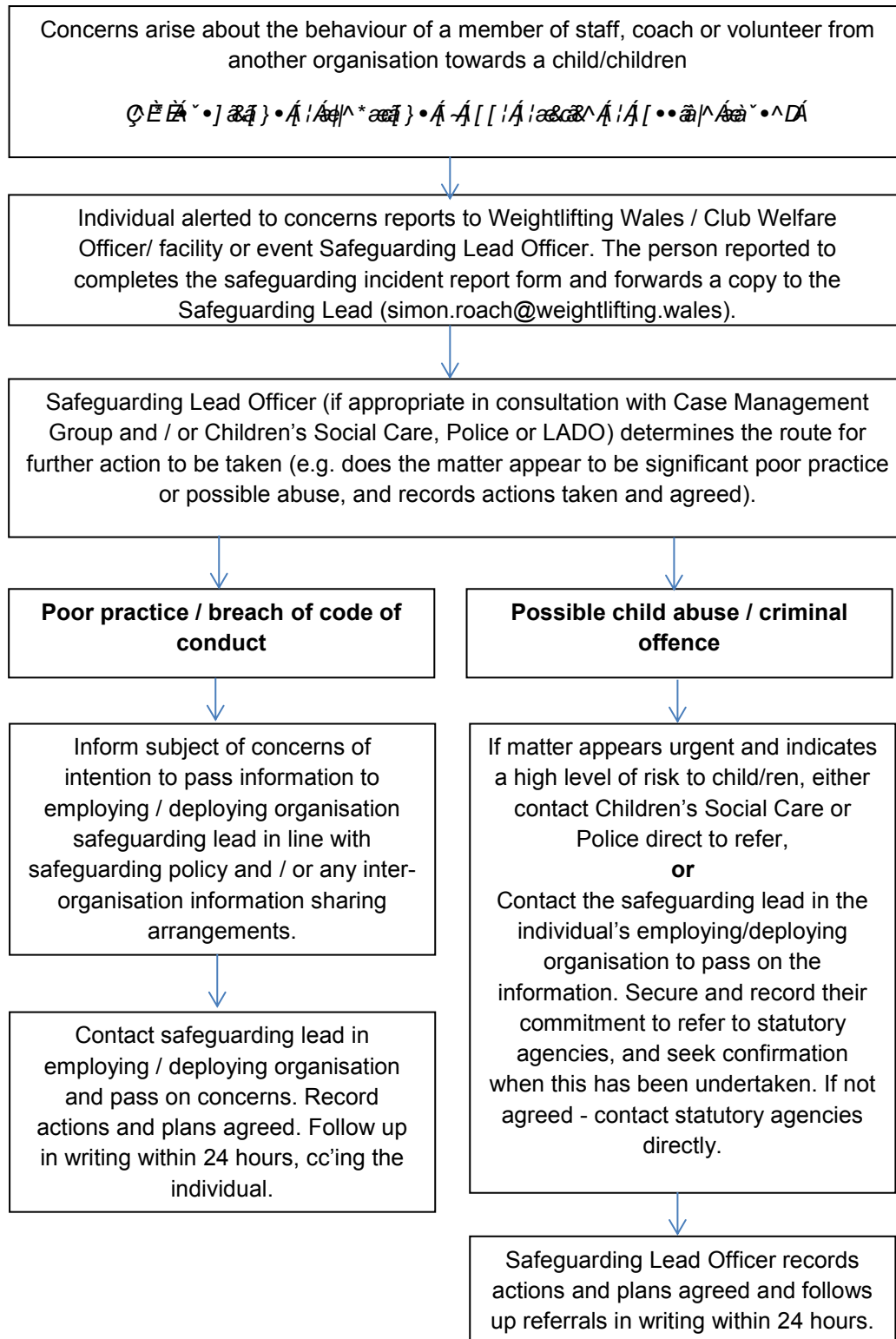


CPSU procedure flowcharts

Adopted by WW

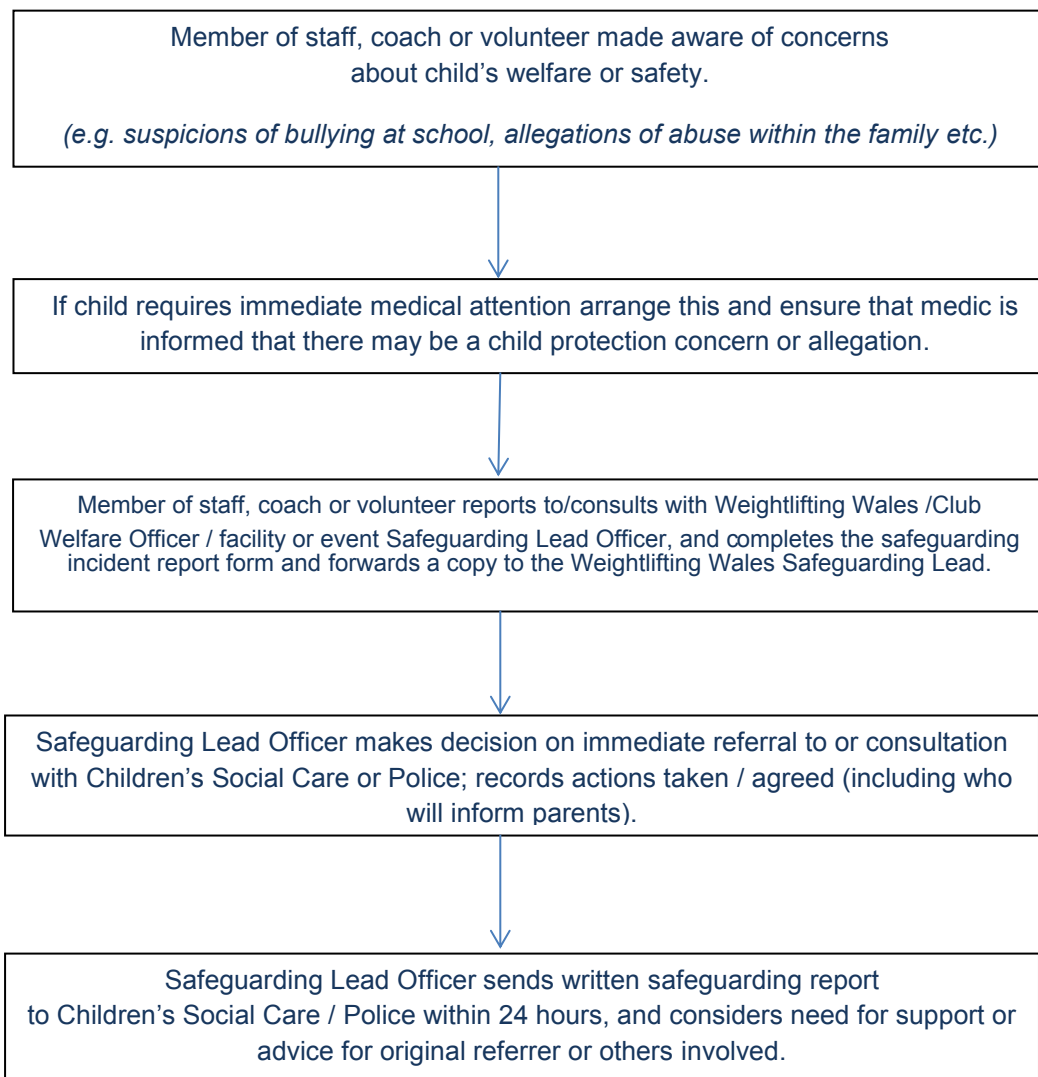
Outline safeguarding reporting procedure concerns

2. About the behaviour of another organisation's staff member or volunteer (e.g. allegations reported about an individual working for a partner organisation)



Outline safeguarding reporting procedure concerns

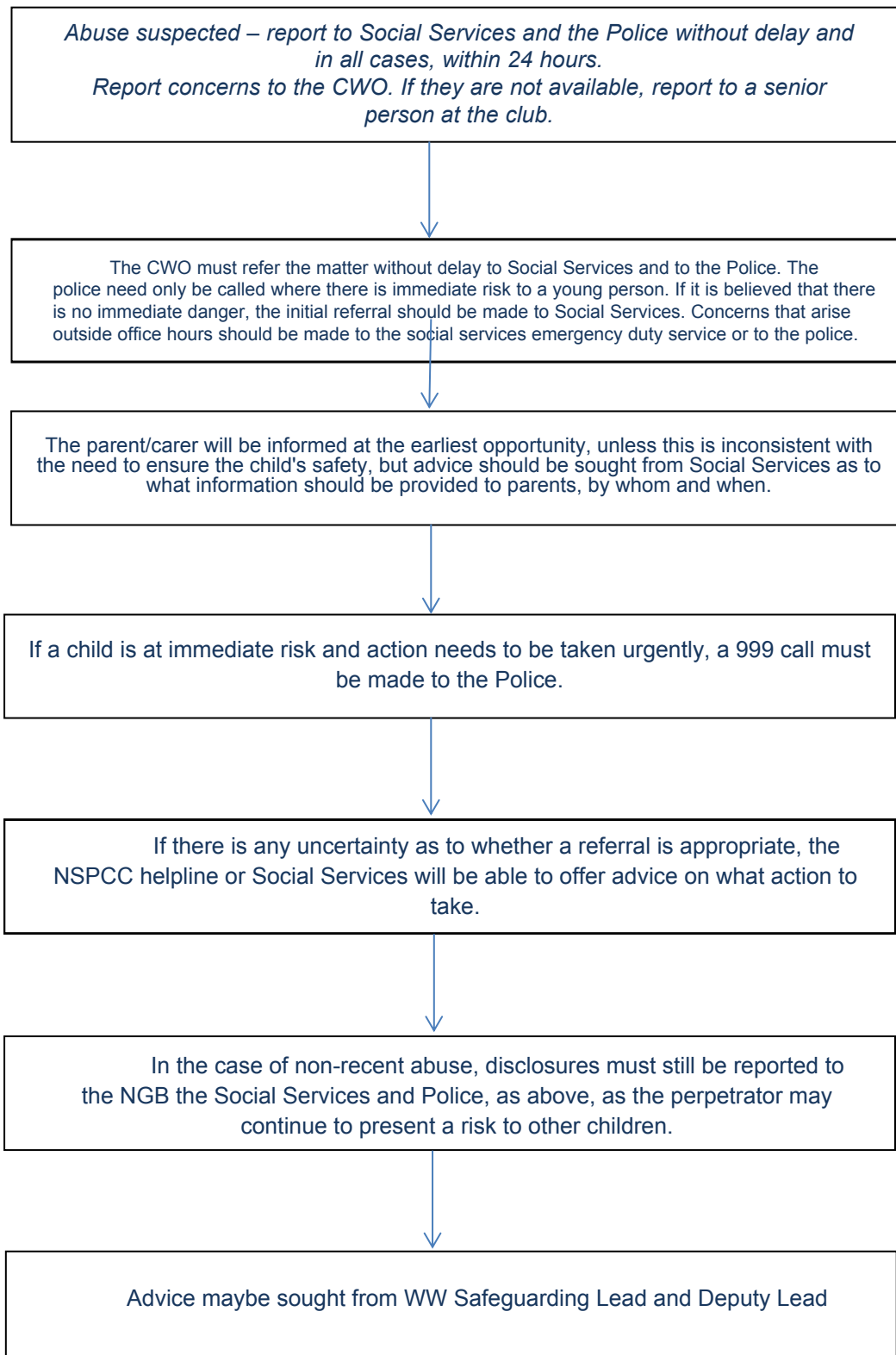
3. About children and young people arising outside of sport (e.g. at home, school or in the community)



Outline safeguarding reporting procedure concerns

4. About children and young people arising within a club, but not involving a WW Member

(e.g. A member of the public who is a member of the facility where the club is based)



Updated 2022